

DURING THE EVENT - BLIZZARD

If the blizzard catches you in the car, take the following steps:

- Pull over.
- Turn on the emergency lights and hang a cloth on the radio antenna or the window.
- Stay in the car until rescue forces come to your aid.
- Do not leave unless you see a building nearby where you could shelter.

Beware, the distances are distorted by the swept snow.

- Start the engine and the heating for 10 minutes every hour, when the engine is running, slightly open the window for ventilation window, against inhaling carbon monoxide.
- Do not fall asleep.



5. EARTHQUAKE



DURING THE EVENT

- Get to a safe place immediately and stay calm until the earthquake ends.
- If you are inside a building, stay put, do not try to go outside and do not go on the balcony.
- Shelter under a table, desk, or solid piece of furniture and hold on to it.
- If you are in a hallway, crouch near an interior wall and protect your head and face.
- Move away from windows, mirrors, libraries, high furniture, lighting fixtures.
- If you are in a wheelchair, lock the wheels and protect your head and neck.
- Do not go outside where you may be injured. Do not use the elevator.

IF YOU ARE OUTSIDE THE BUILDING find shelter in a safe place.

IF YOU ARE IN A VEHICLE, stay in the car.

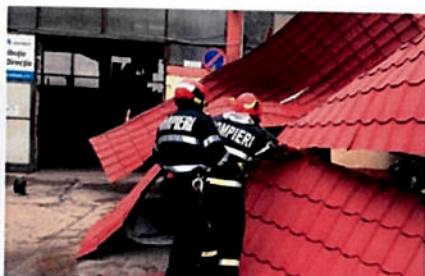
AFTER THE EVENT

- Firstly, try to stay calm.
- If you have been caught under rubble or in enclosures, at certain intervals you must hit with a hard object in the most compact part of the place where you are trapped, to transmit signals that can be identified and located by the special search and rescue equipment.
- Use the phone only to signal an emergency.

CAREFUL! Pay attention to the stairs. Seismic motion may have affected their strength.



Protejăm mediul! We protect the environment!
Toți avem șanse egale! We all have equal chances!



Interreg - IPA CBC România - Serbia



Cooperare dincolo de frontiere.

Programul Interreg-IPA de Cooperare Transfrontalieră Romania-Serbia este finanțat de Uniunea Europeană prin Instrumentul de Asistență pentru Preaderare (IPA II) și cofinanțat de statele partenere în program.



Protecția mediului și
managementul riscului

Titlul proiectului: Rețea comună durabilă pentru situațiile de urgență din Banat
cod e-MS: RORS 283

Editorul materialului: Consiliul Județean Caraș-Severin
Data publicării: ianuarie 2020

Conținutul acestui material nu reprezintă în mod necesar poziția oficială a Uniunii Europene.
Pentru eventuale sesizări, contactați: romania-serbia@mdrap.ro

www.romania-serbia.net